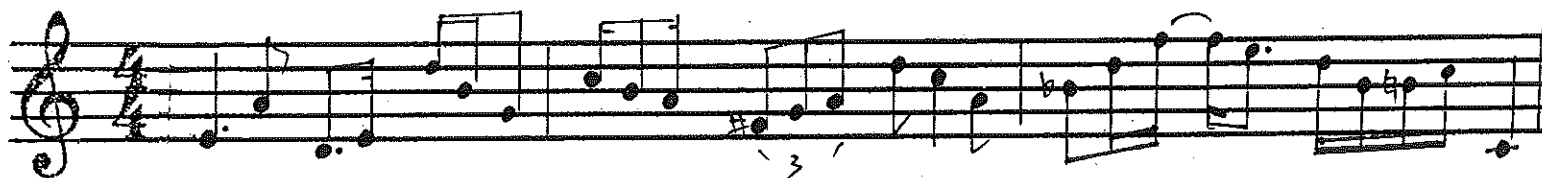


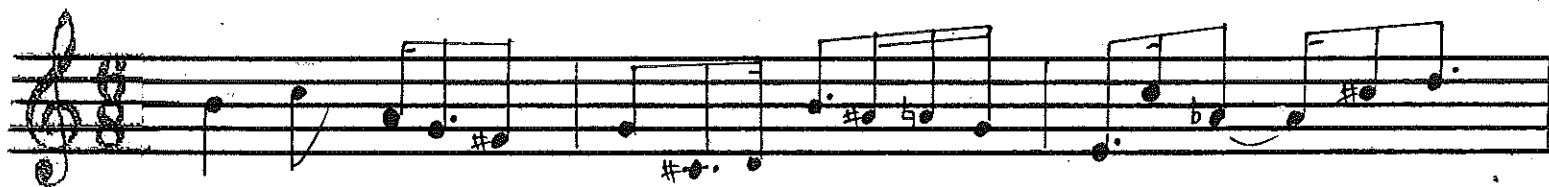
視唱一

(請在鋼琴上彈出每一首的第一個音後，再開始視唱)

(一)



(二)



視唱二

(請在鋼琴上彈出每一首的第一個音後，再開始視唱)

(一)



(二)



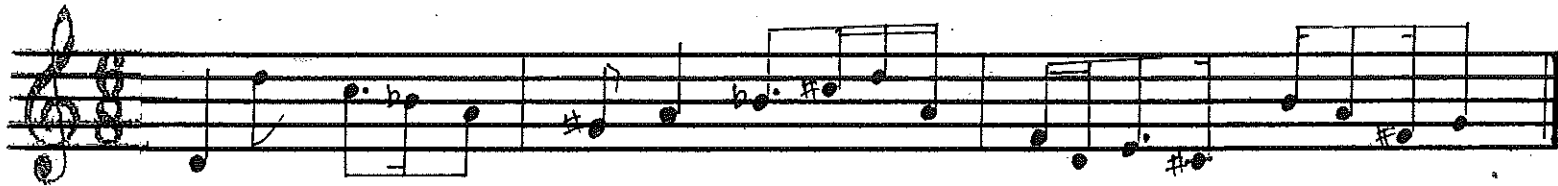
視唱三

(請在鋼琴上彈出每一首的第一個音後，再開始視唱)

(一)



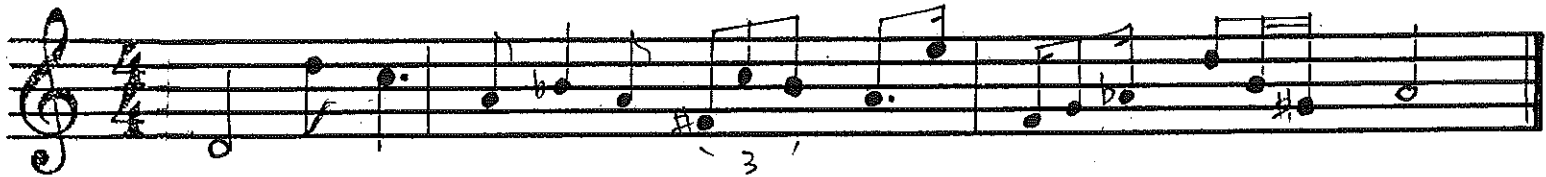
(二)



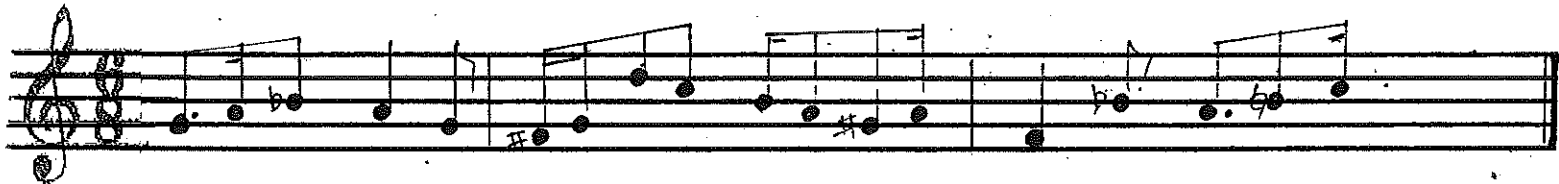
視唱 四

(請在鋼琴上彈出每一首的第一個音後，再開始視唱)

(一)



(二)



視唱五

(請在鋼琴上彈出每一首的第一個音後，再開始視唱)

(一)

Musical staff (一) in G major, 4/4 time. The first note is G4. The melody is: G4 (quarter), B4 (quarter), A4 (quarter), G4 (quarter), F#4 (quarter), E4 (quarter), D4 (quarter), C4 (quarter), B3 (quarter), A3 (quarter), G3 (quarter), F#3 (quarter), E3 (quarter), D3 (quarter), C3 (quarter), B2 (quarter), A2 (quarter), G2 (quarter). There is a triplet of eighth notes: D4, E4, F#4, marked with a '3' below them.

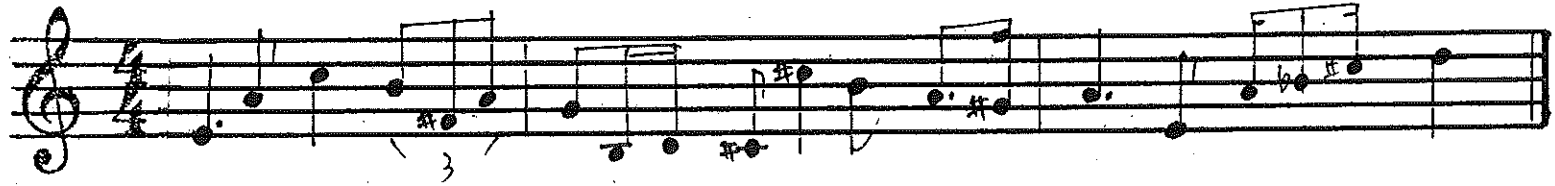
(二)

Musical staff (二) in G major, 4/4 time. The first note is G4. The melody is: G4 (quarter), A4 (quarter), B4 (quarter), A4 (quarter), G4 (quarter), F#4 (quarter), E4 (quarter), D4 (quarter), C4 (quarter), B3 (quarter), A3 (quarter), G3 (quarter), F#3 (quarter), E3 (quarter), D3 (quarter), C3 (quarter), B2 (quarter), A2 (quarter), G2 (quarter). There is a triplet of eighth notes: D4, E4, F#4, marked with a '3' below them.

視唱 六

(請在鋼琴上彈出每一首的第一個音後，再開始視唱)

(一)



(二)

