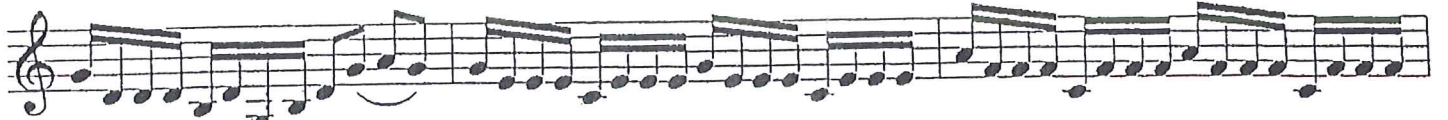


視奏(一)

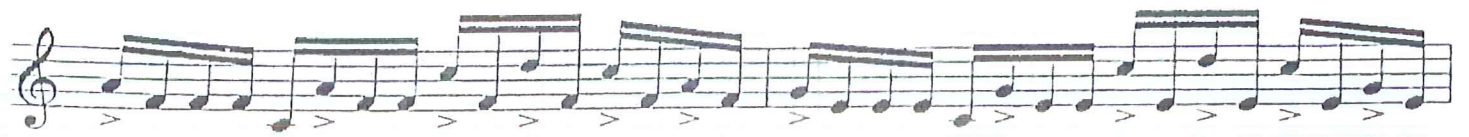


L R L R L R R

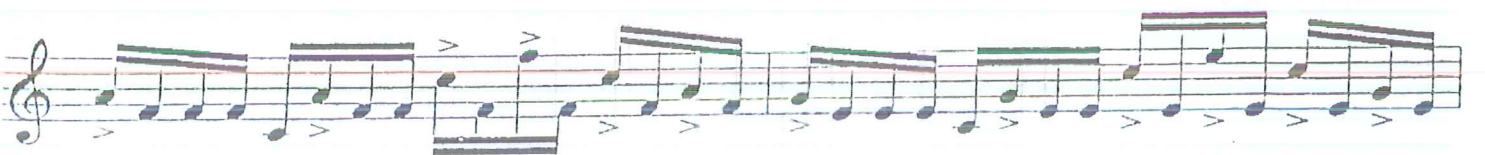
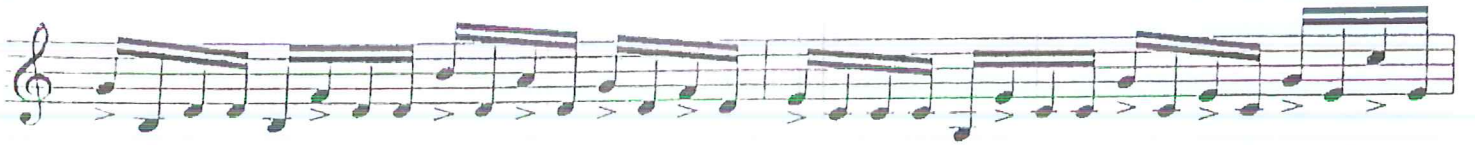


R L R L

視奏(二)



R L R R L R L L R L R L R L R L R L R R L R L L R L R L R L R L



視奏 (三)

Courante

Handwritten musical notation for 'Courante' in bass clef, 3/4 time, key of D major. The piece consists of two staves of music. The first staff contains measures 1 through 3, and the second staff contains measures 4 through 7. The notation includes various rhythmic values, slurs, and fingering numbers (1, 2, 3). There are also 'V' markings above some notes, possibly indicating vibrato or accents.

視奏 (四)

Handwritten musical notation for '視奏 (四)' in bass clef, 3/4 time, key of D major. The piece consists of two staves of music. The first staff starts at measure 35 and the second staff starts at measure 39. The notation includes various rhythmic values, slurs, and fingering numbers (1, 2, 3, 4). There are also 'V' markings above some notes.

視奏(五)

Handwritten musical score for the first system. The top staff is in treble clef with a key signature of two sharps (F# and C#) and a common time signature (C). It begins with a whole note G4, followed by a half note A4, and then a series of eighth notes: B4, C5, D5, E5, F#5, G5, A5, B5, C6, D6, E6, F#6, G6, A6, B6, C7. The bottom staff is in bass clef with the same key signature and time signature. It starts with a whole note G2, followed by a half note A2, and then a series of eighth notes: B2, C3, D3, E3, F#3, G3, A3, B3, C4, D4, E4, F#4, G4, A4, B4, C5. A dynamic marking of *mp* is placed in the first measure of the second staff.

Handwritten musical score for the second system. The top staff is in treble clef with a key signature of two sharps (F# and C#) and a common time signature (C). It begins with a whole note G4, followed by a half note A4, and then a series of eighth notes: B4, C5, D5, E5, F#5, G5, A5, B5, C6, D6, E6, F#6, G6, A6, B6, C7. The bottom staff is in bass clef with the same key signature and time signature. It starts with a whole note G2, followed by a half note A2, and then a series of eighth notes: B2, C3, D3, E3, F#3, G3, A3, B3, C4, D4, E4, F#4, G4, A4, B4, C5. A dynamic marking of *mf* is placed in the first measure of the second staff. A crescendo hairpin is located in the second measure of the second staff, pointing to the right.